

Office of Health Equity & Human Rights

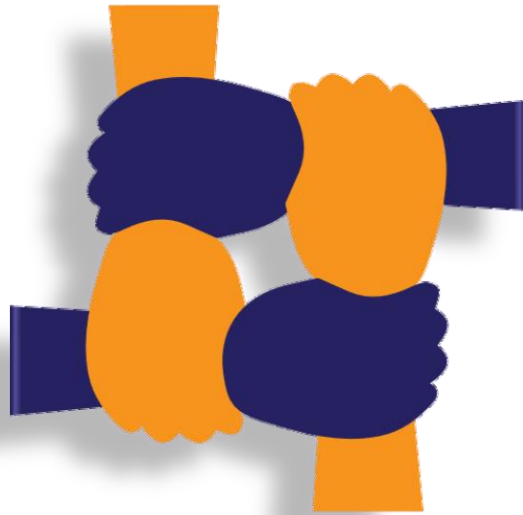


Health Care for All New Yorkers
Keynote Address
March 3rd, 2023

Offices of Health Equity and Human Rights



AIDS
Institute



Minority Health and
Health Disparities
Prevention

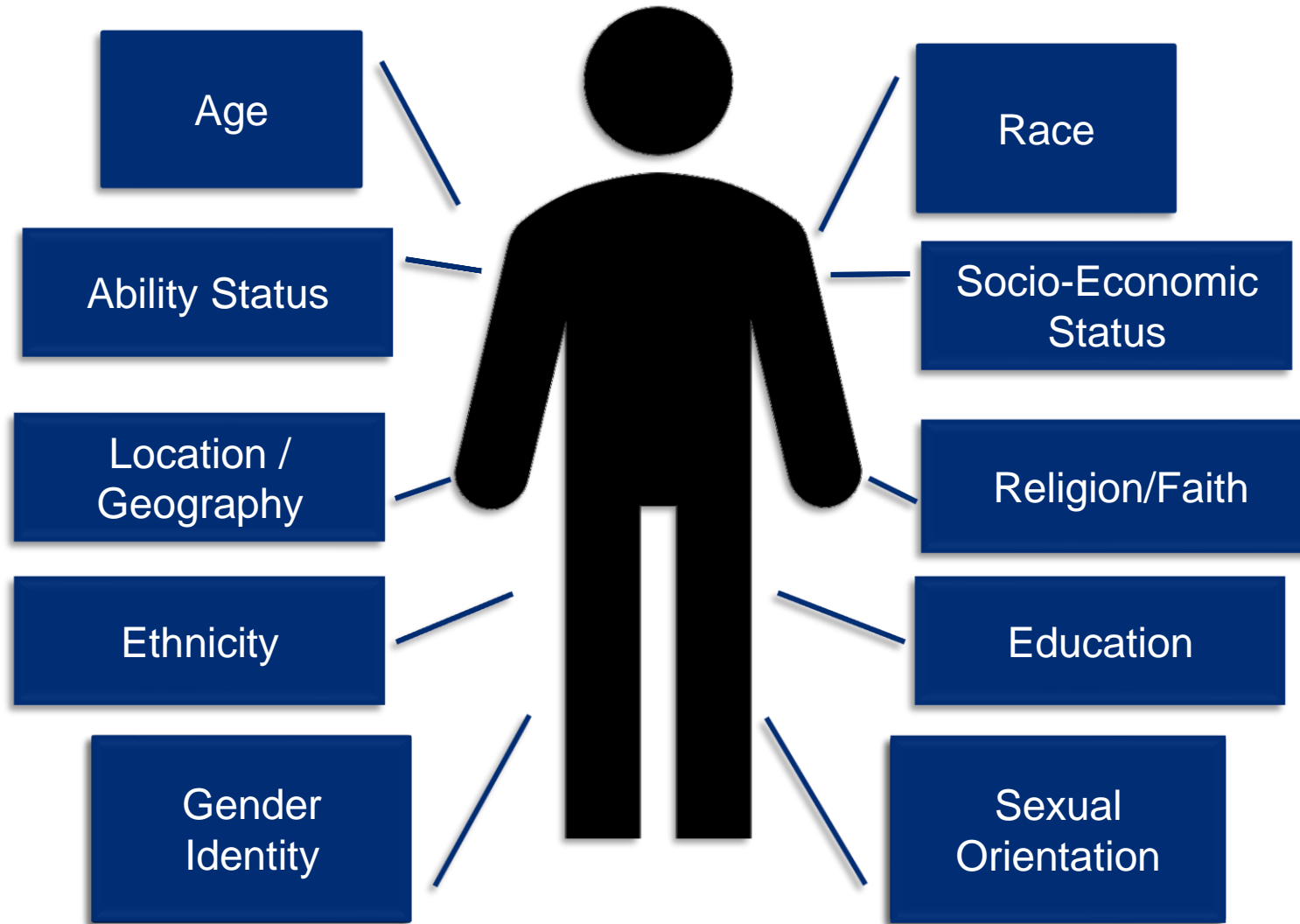


Gun Violence
Prevention

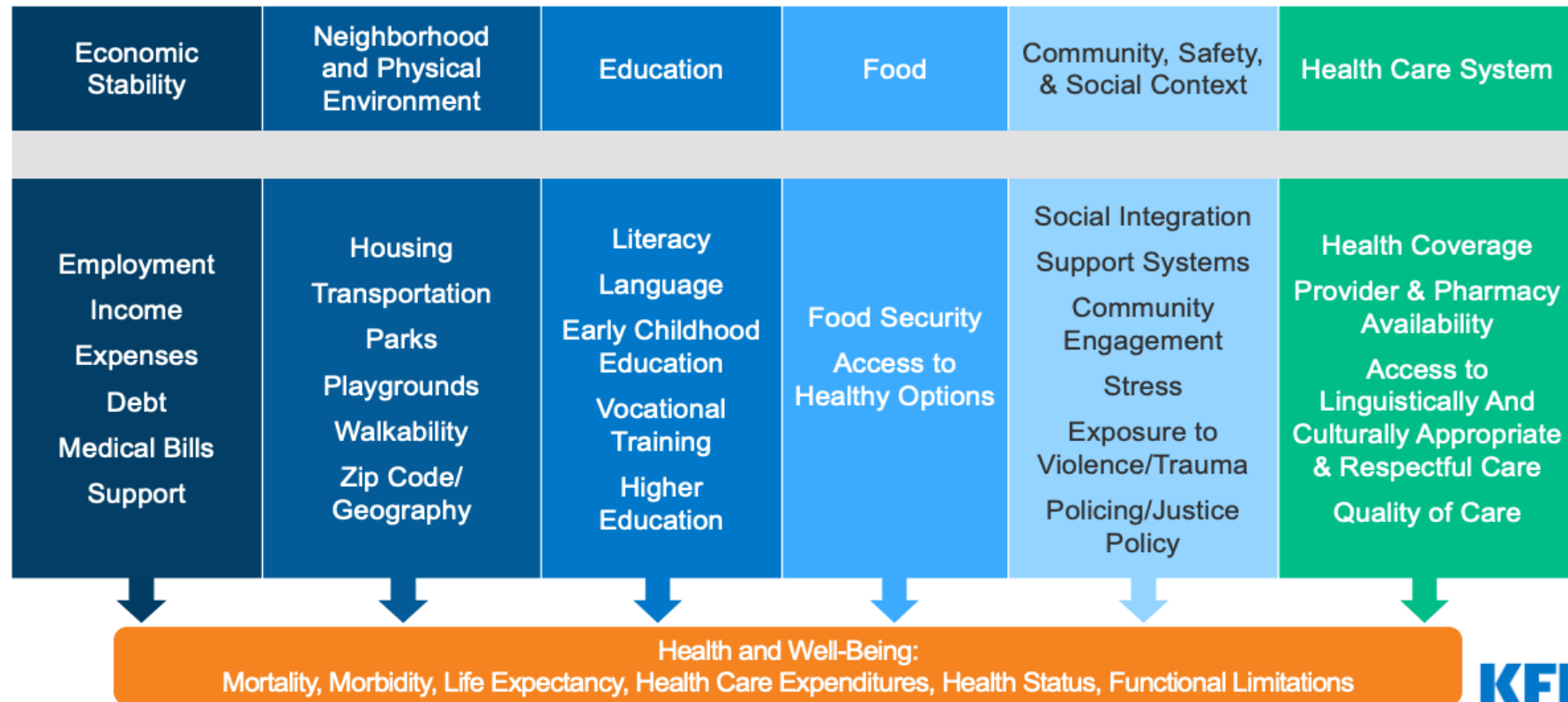


Office of DEI

What makes a person who they are?



"Social determinants of health" shall mean **life-enhancing resources**, such as availability of healthful foods, quality housing, economic opportunity, social relationships, transportation, education, and health care, whose distribution across populations effectively determines the length and quality of life.



Achieving Health Equity Through Systems Transformation and Meaningful Community Engagement

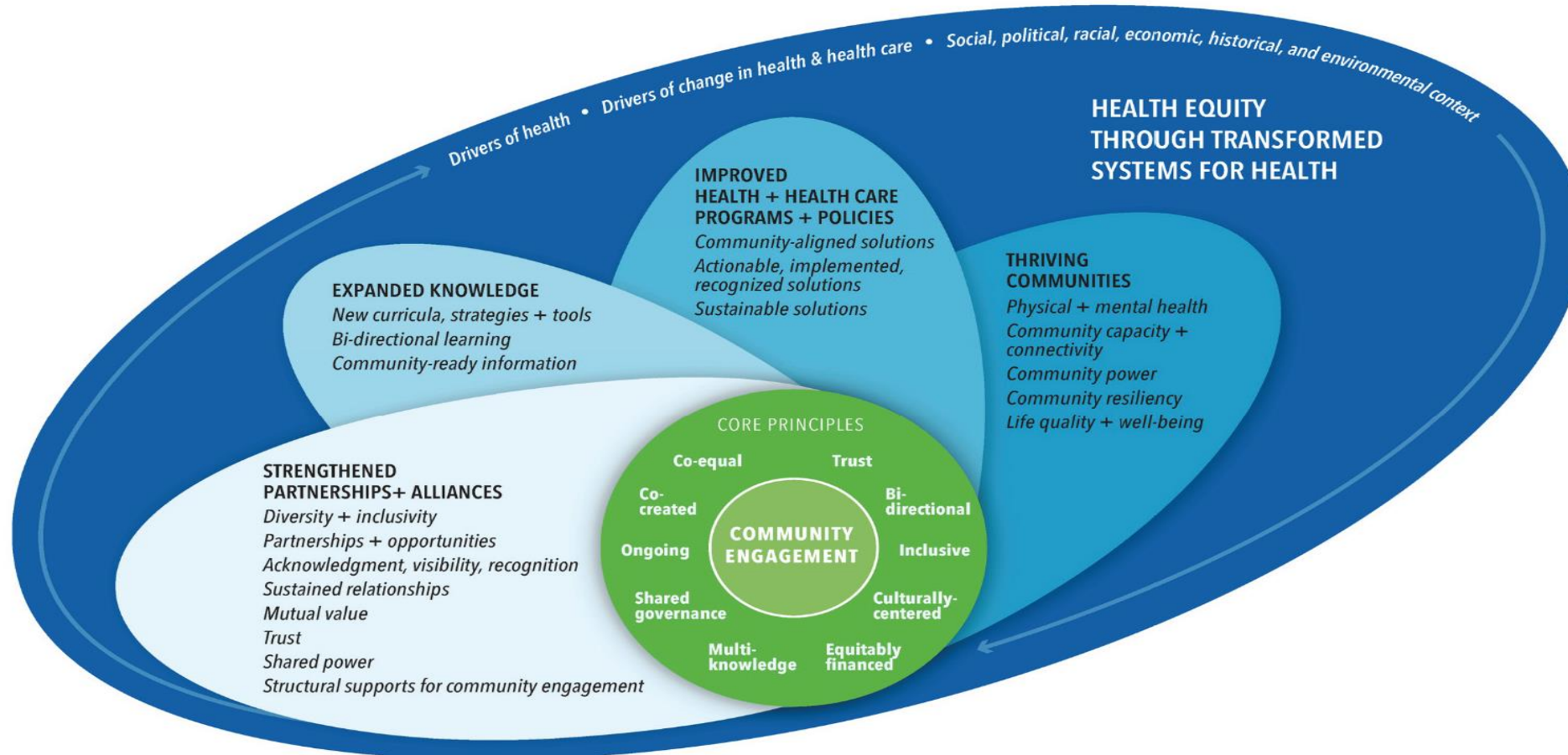


FIGURE 1 | A Dynamic Relationship: Achieving Health Equity and Systems Transformation through Meaningful Community Engagement

Source: National Academy of Medicine

WHAT DO WE NEED TO CONTINUE THIS WORK?

A NATIONAL
NETWORK

NORMALIZE

ORGANIZE

OPERATIONALIZE



SHARED LANGUAGE
& SHARED WHY

INTERNAL INFRASTRUCTURE
FOR CHANGING GOVERNMENT

INFRASTRUCTURE FOR
SUSTAINED CAPACITY
& EFFECTIVE COMMUNITY
PARTICIPATION

ROLES OF STATE
PRACTITIONERS

SUPPORT FOR FOLKS
DOING THIS WORK
(BURNOUT)

IDENTIFY RACIAL
EQUITY BARRIERS

ROOT CAUSES → OUTCOMES
ACCESSIBLE RESOURCES

STATEWIDE
STRATEGY
→ DESILO

LEGAL & NARRATIVE
STRATEGIES

POWER ANALYSIS

"What do we need to continue this work?" - Graphic recording from Nov 2 convening by [Abby VanMuijen](#)

Centering the voices of communities and stakeholders



- Advancing equity
- Access to support and care
- Anti-stigma efforts
- Promotion of human rights

Community Resilience

the sustained ability of communities to withstand, adapt to, and recover from adversity.

- Office of the Assistant Secretary for Preparedness and Response([2015](#))



Community's ability to ~~bounce back~~, or bounce forward, following an event.

- SAMHSA Resiliency in Disaster Behavioral Health podcast ([last updated 4/21/22](#))

Guiding Principles to address disparities



Re-invest in neighborhoods that have been disproportionately impacted by racist policies



Amplify community voice and leadership to elevate marginalized communities using an assets-based approach



Address social determinants of health and promote health equity and justice



Employ individuals in a unique workforce with shared lived experiences to create change from the ground up



Community driven investment planning so the local community is determining funding priorities



Invest in the continuum of care and community coalition development to build credibility in the community



THANK YOU

Johanne E. Morne, MS
Deputy Commissioner, Health Equity and Human Rights

Johanne.Morne@health.ny.gov